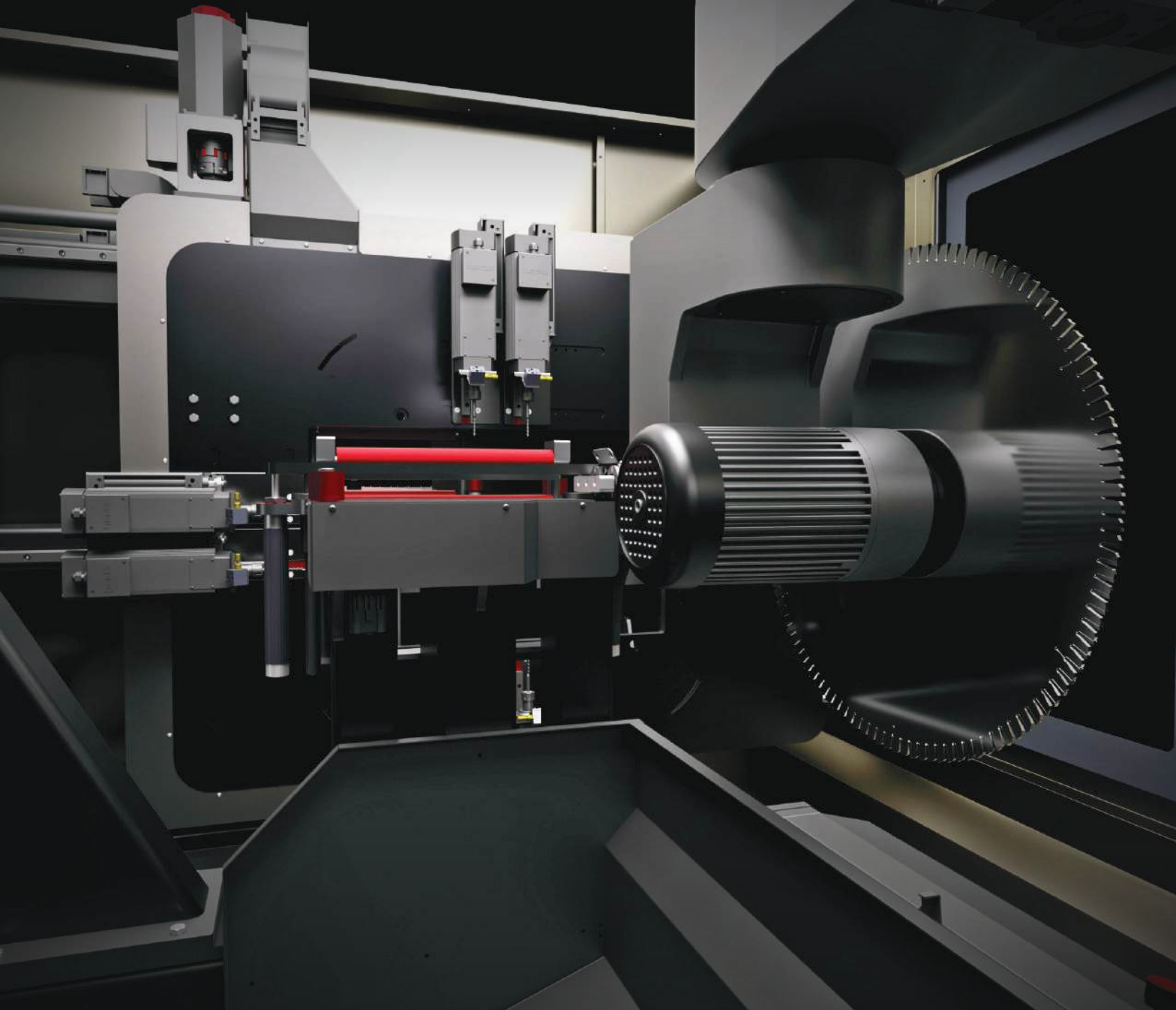


# ALCOR SERIES



 ozmachine

 özçelik®

Produced and Backed by ÖZÇELİK

# ALCOR SERIES

Alcor series machines are CNC-controlled cutting and machining centers designed for multi-axis processing of aluminum and PVC profiles, including cutting, milling, drilling, marking, and opening slots.

ALCOR- I machines are dedicated to cutting profiles. ALCOR- II R and II C machines offer both cutting and machining capabilities for profiles. ALCOR IV and ALCOR V are capable of performing a wider range of operations on larger and more specialized industrial profiles.

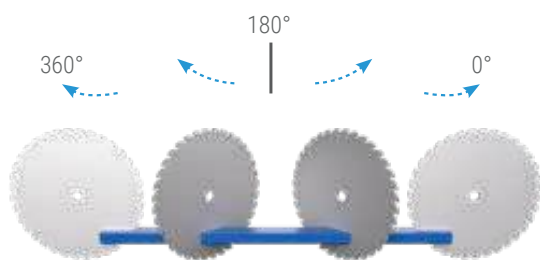
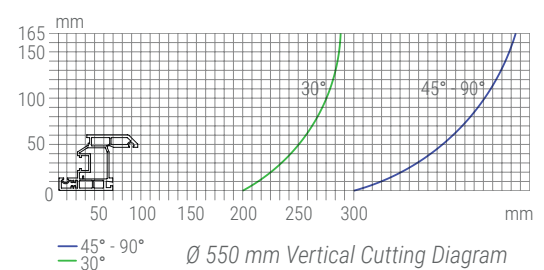
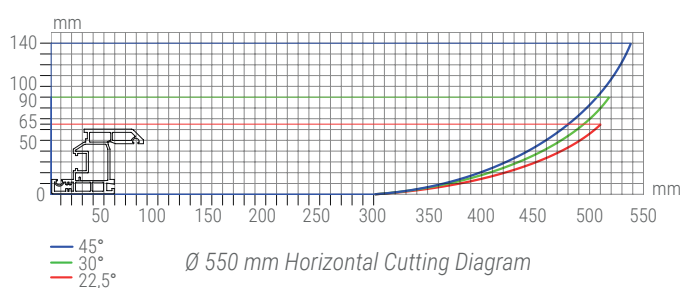
ALCOR I, ALCOR II R, and ALCOR II C machines utilize a servo-driven saw unit to perform automatic cutting operations at any angle between 30° and 150°. The ALCOR IV machine features a saw cutting angle range

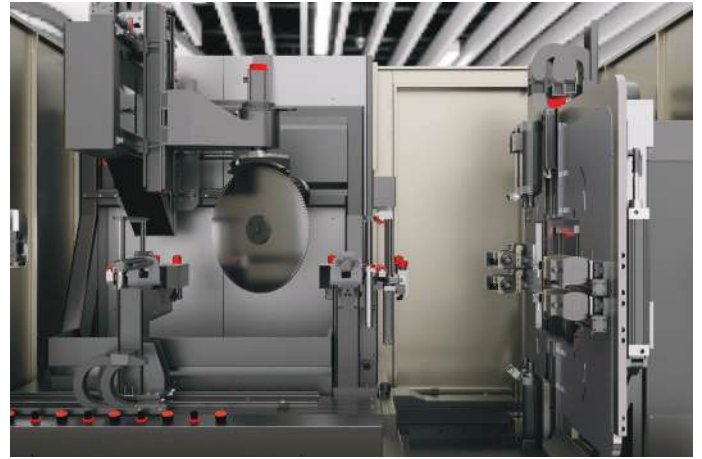
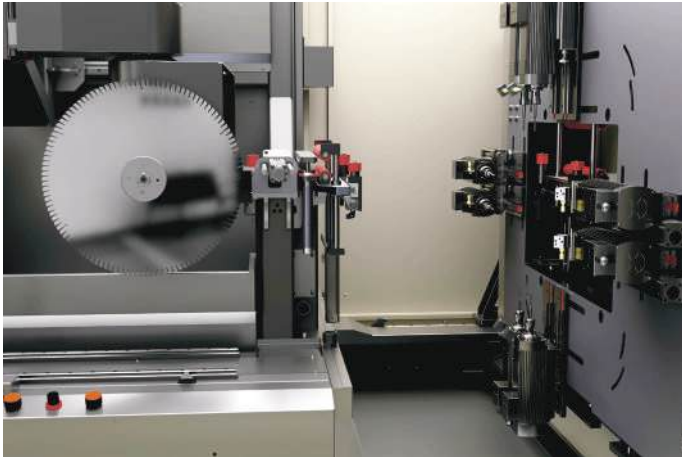
of 0° to 180°. As the pinnacle of the ALCOR series, the ALCOR V machine boasts a full 360° saw cutting capability, complemented by a 5th axis rotary motion of 0° to 180° for versatile processing of large and industrial profiles.

It provides a high-efficiency, high-speed process, automated profile loading system, pneumatic gripper robot for precise positioning and a profile unloading unit.

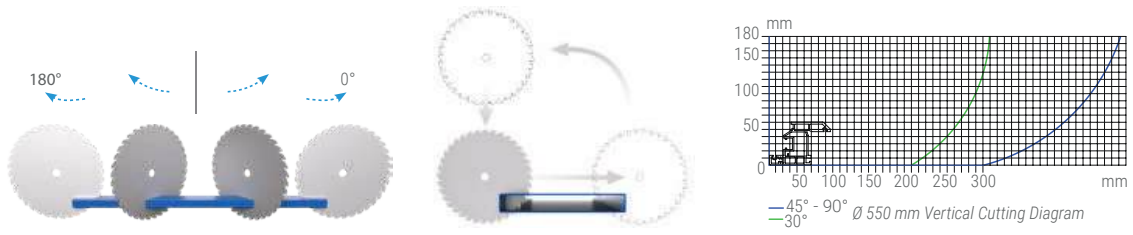
Equipped with high-precision linear bearings and robust servo motor systems, Alcor series are engineered to deliver high-speed axis dynamics, optimizing productivity and throughput.

## ALCOR - V

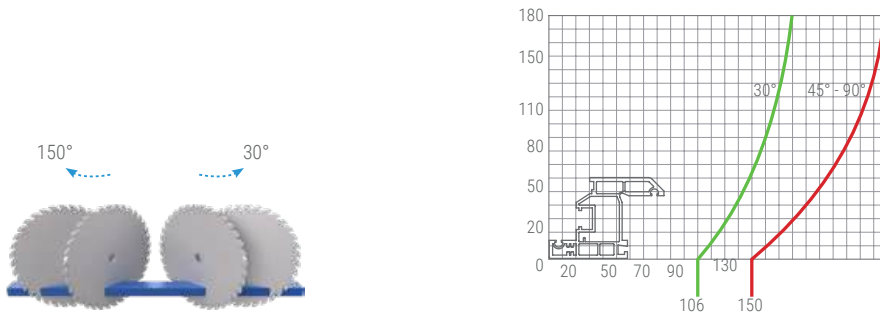




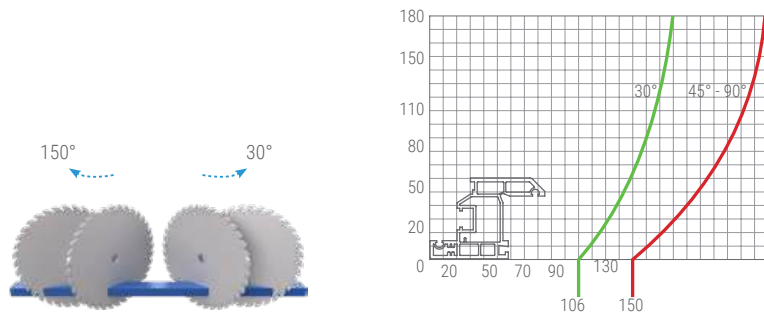
ALCOR - IV



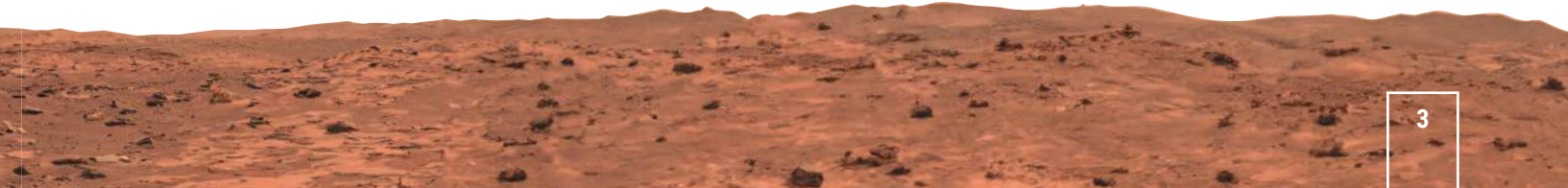
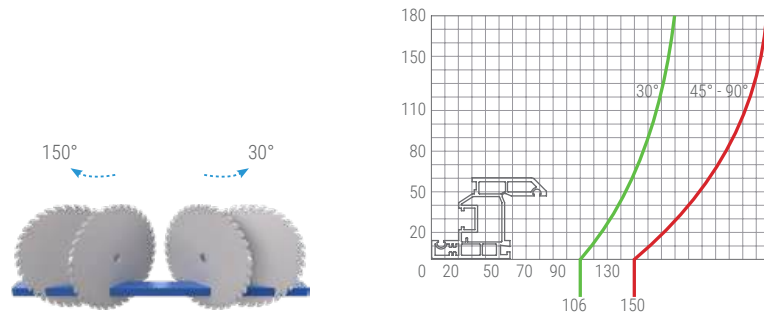
ALCOR - II C



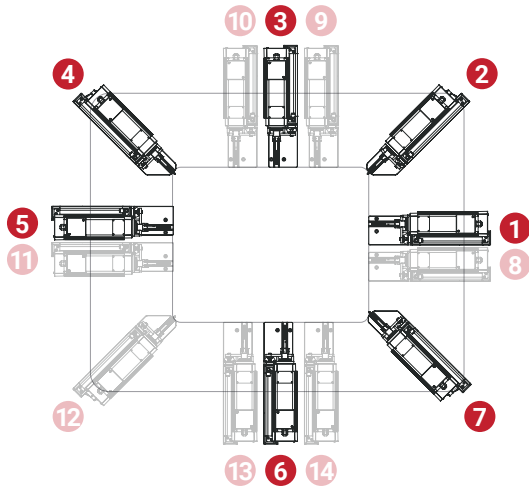
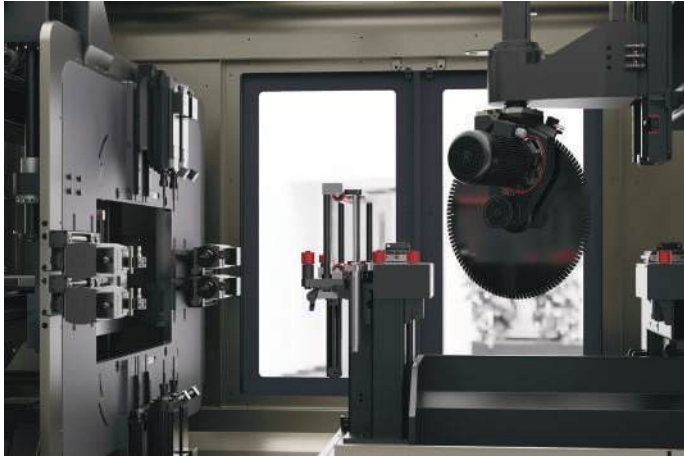
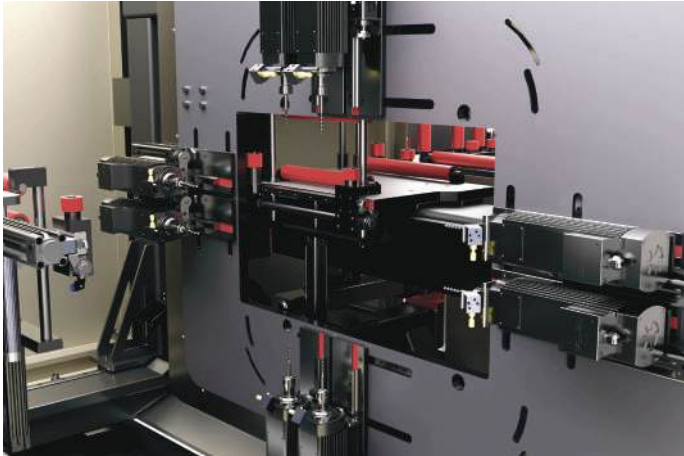
ALCOR - II R



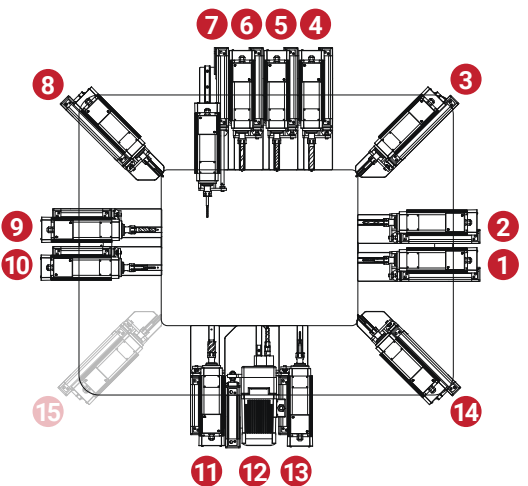
ALCOR - I



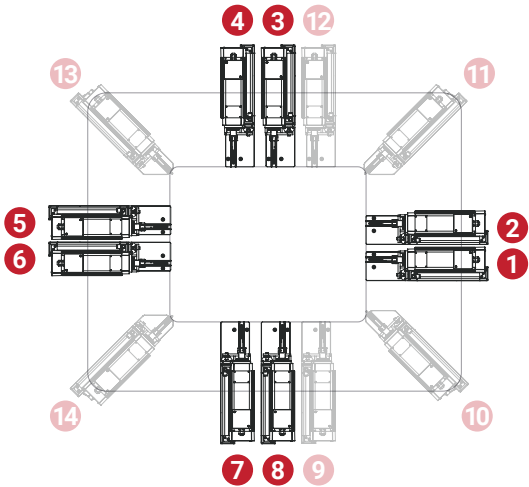
# CONFIGURABLE SPINDLE MOTORS



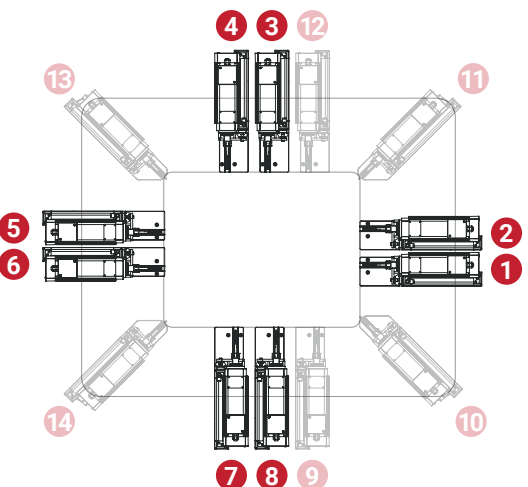
ALCOR - II C



ALCOR - II R



ALCOR - IV

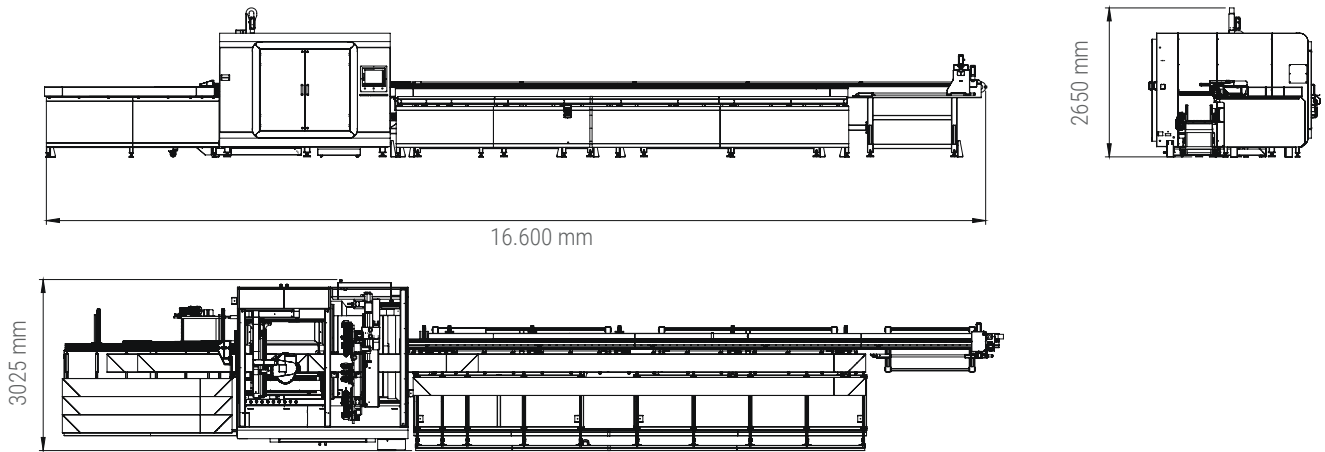


ALCOR - V

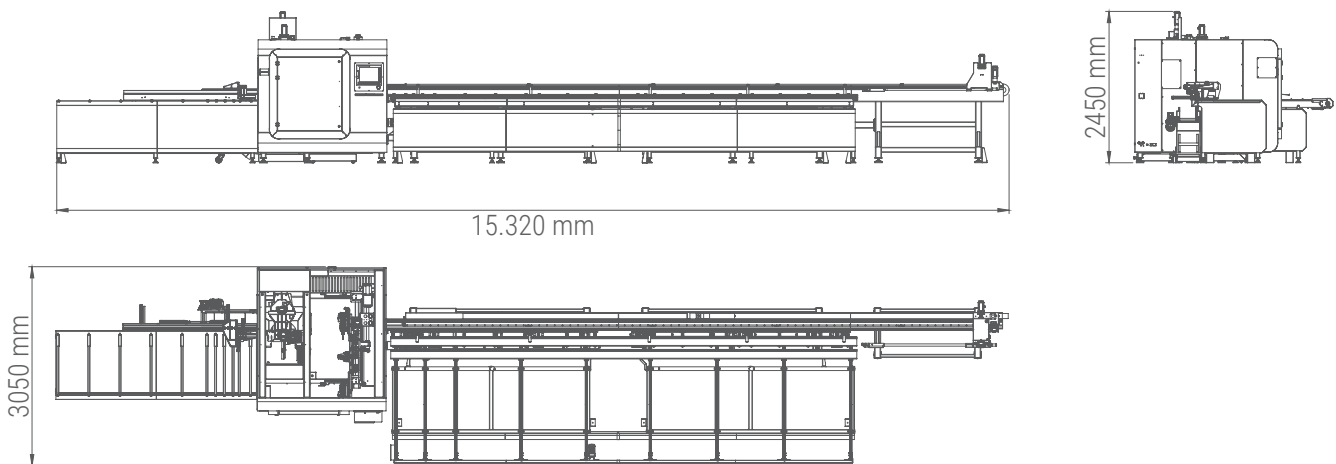


# LAYOUT

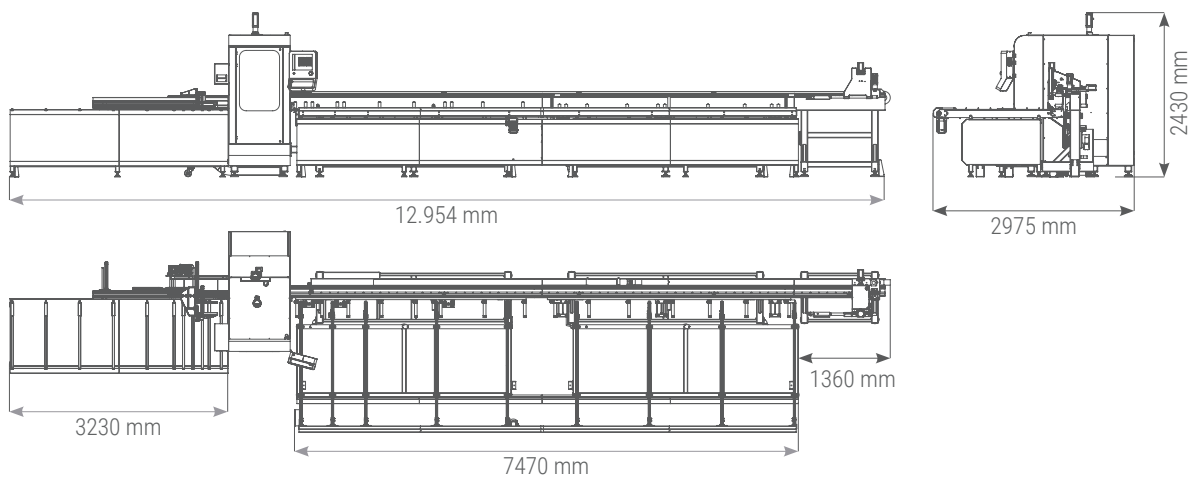
## ALCOR - IV / V



## ALCOR - II C / II R

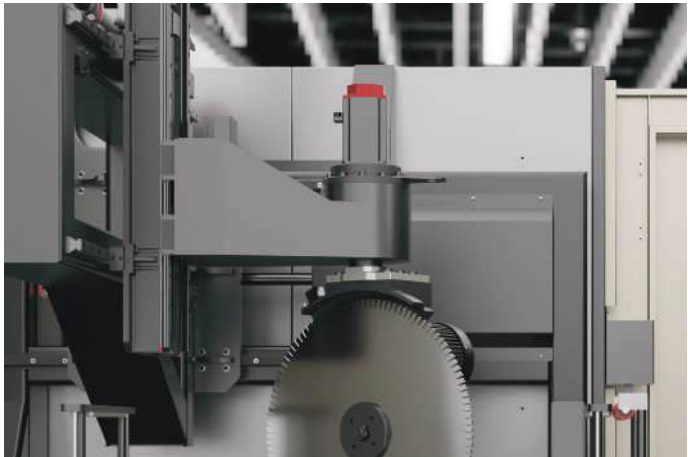
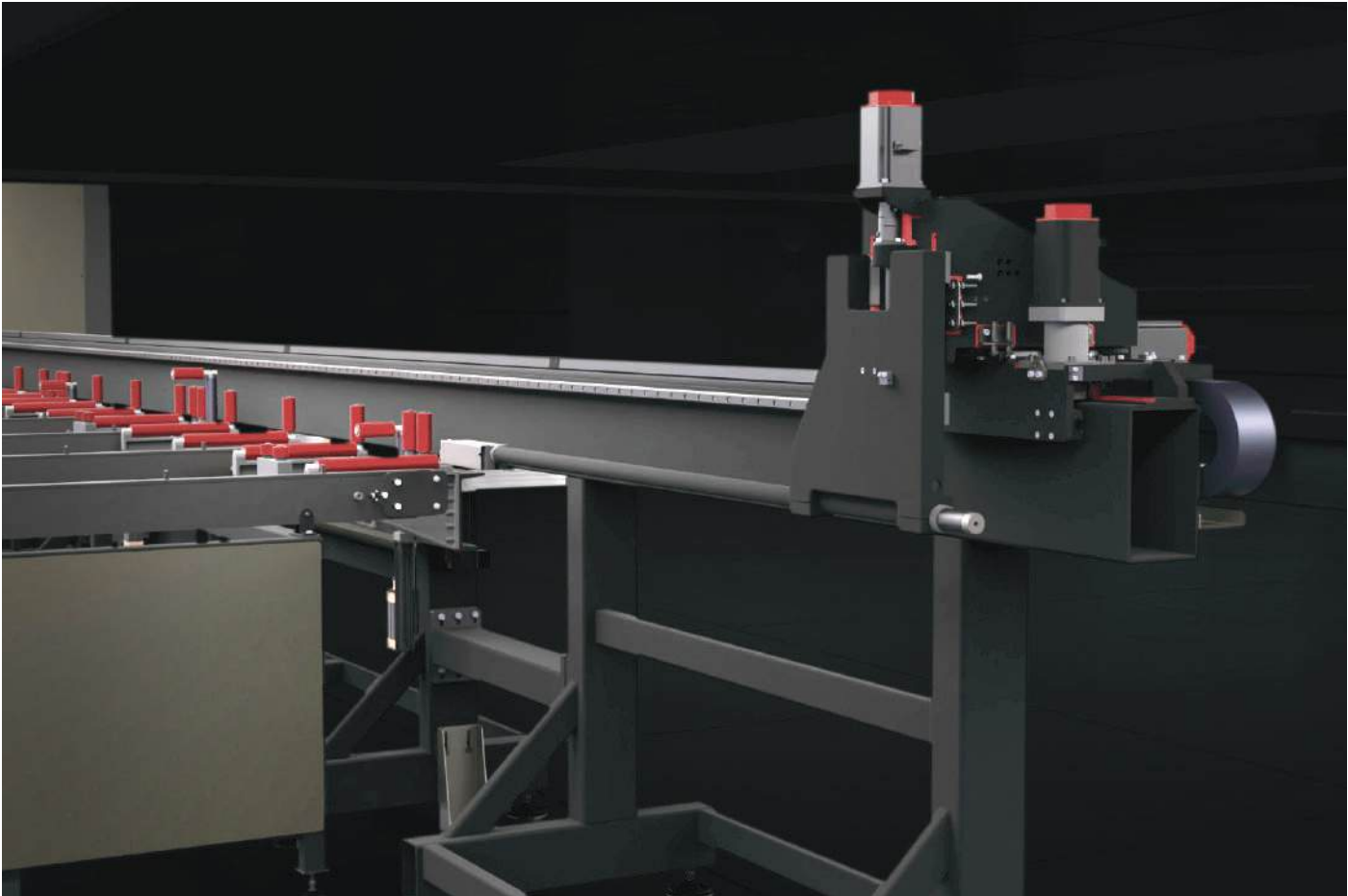


## ALCOR - I



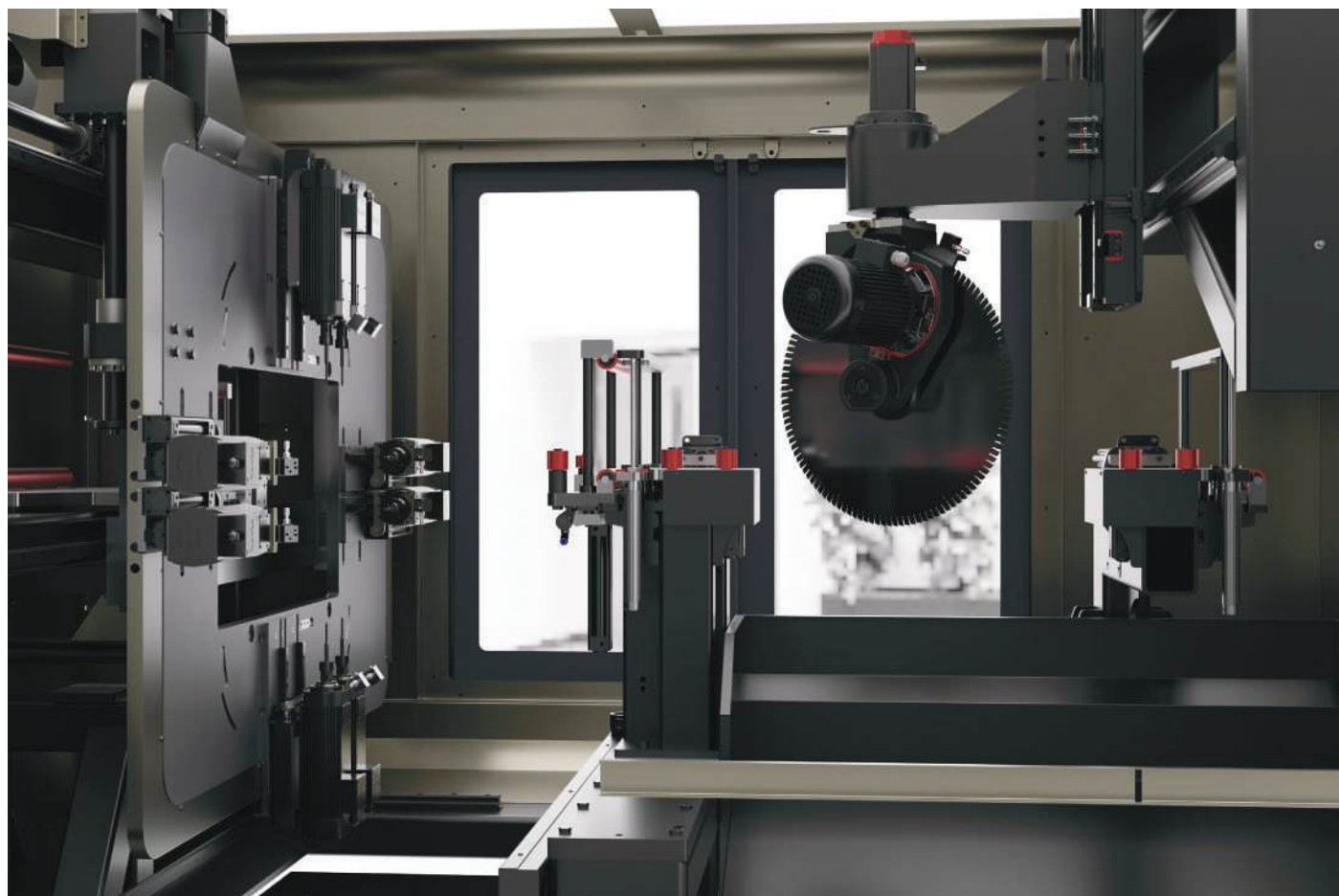
# ERGONOMIC DESIGN

Featuring a servo-driven motion system and a rotating gripper that adapts to various profile shapes, the system enables rapid and accurate positioning of profiles within the processing area.



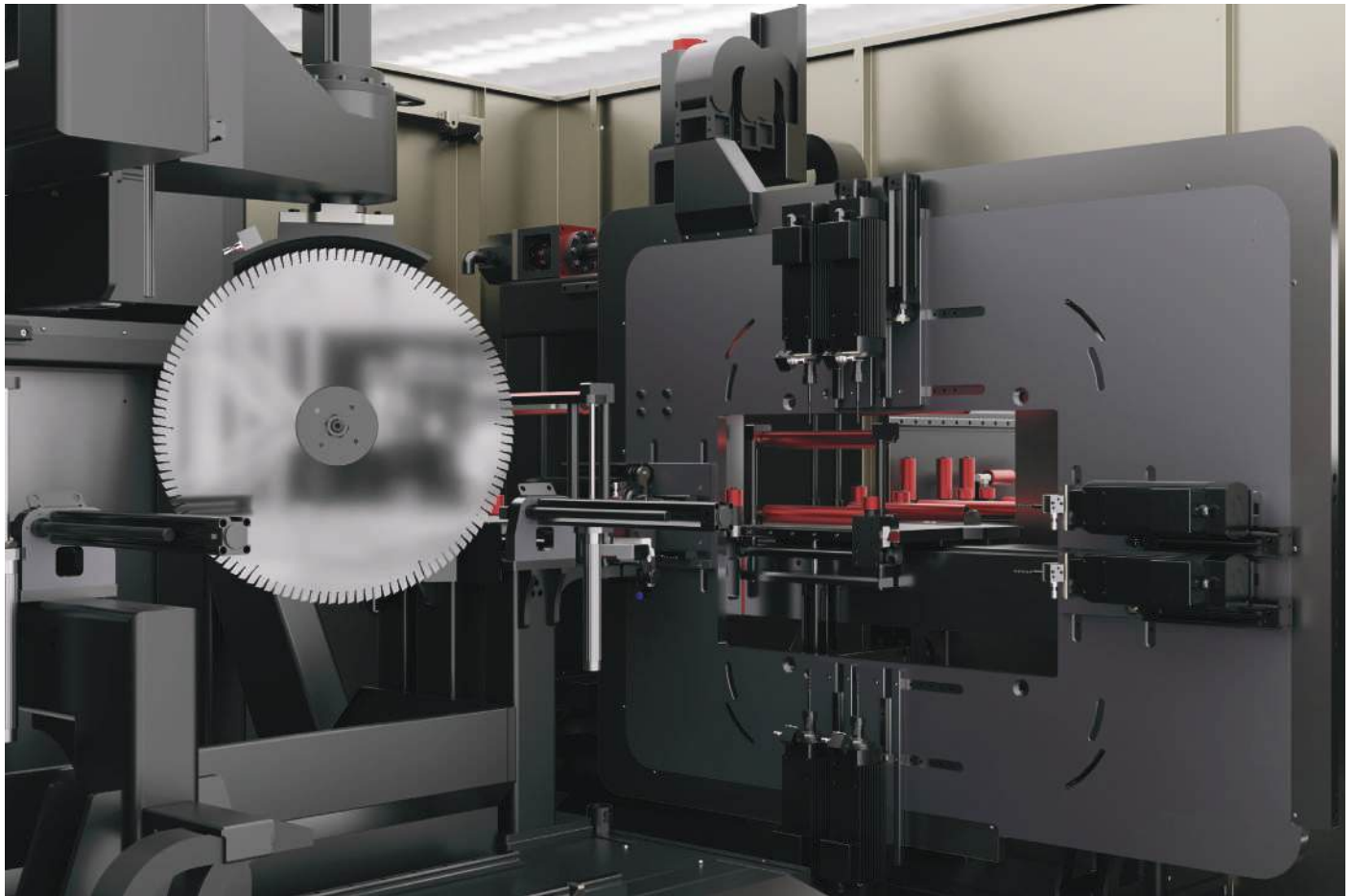
# PLEXIGLASS SAFETY ENCLOSURE

The enclosed cabinet features a highly durable plexiglass safety window on its front, ensuring a safe operating environment for the operator and providing an unobstructed view of the process.



# HIGH QUALITY CLAMPS

Equipped with high-pressure clamps horizontally and vertically, the system ensures secure clamping of profiles, minimizing the risk of errors during machining and cutting.





# EASY TO USE INTERFACE

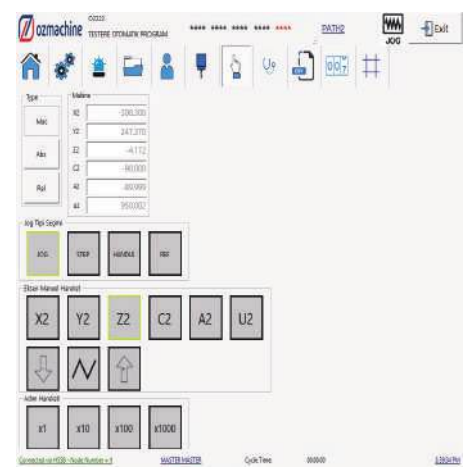
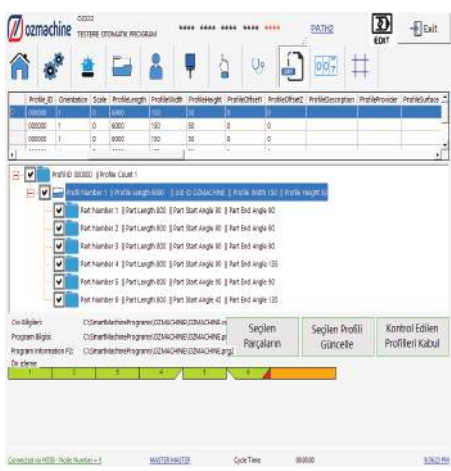
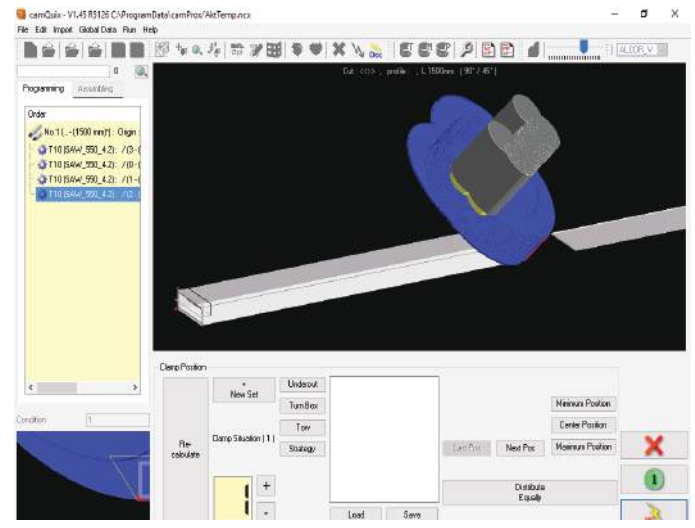
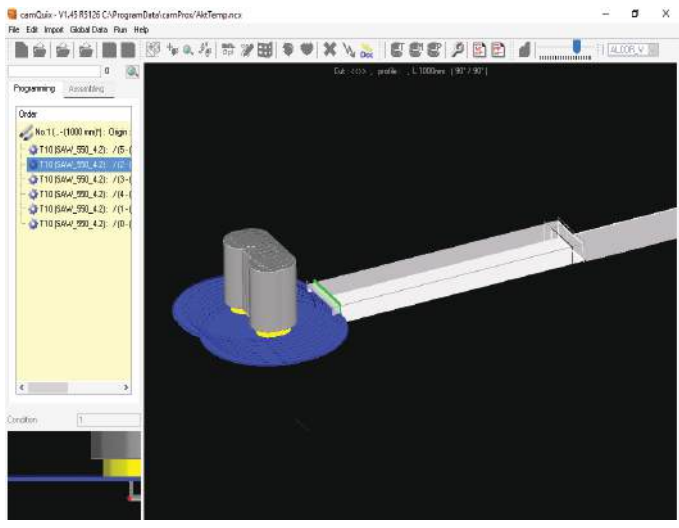


ozmachine 01111 OTOMATİK PROGRAM ALGORİV \*\*\*\*\* PATH1 JOG Exit

Home Settings Alarm Folder User Tools Home

Uzunluk: Çap Ofset X Ofset Y Ofset Z Aç

	Uzunluk	Çap	Ofset X	Ofset Y	Ofset Z	Aç
T1	87.500	5.000	0.300	656.447	-173.000	90
T2	89.250	8.000	0.000	656.790	-294.307	90
T3	87.600	5.000	0.000	330.193	-419.260	0
T4	88.900	8.000	0.000	209.753	-420.740	0
T5	86.200	5.000	-0.400	-111.460	-303.080	-90
T6	86.350	8.000	0.000	-112.323	-182.693	-90
T7	89.100	5.000	0.300	209.547	43.420	-180
T8	89.500	8.000	0.000	330.950	42.353	-180



# MILLING CAPABILITY



Circular Cutout



Latches Hole



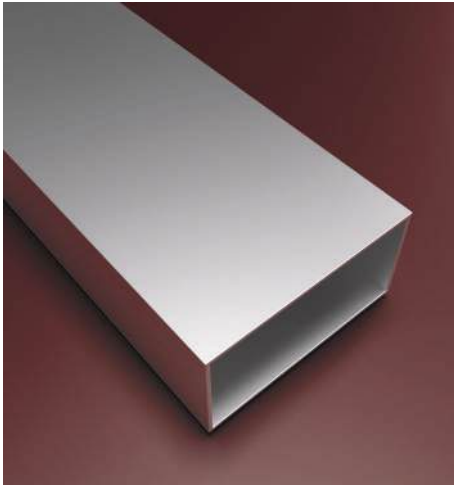
Rectangular Cutout



Opening Slot



# CUTTING CAPABILITY



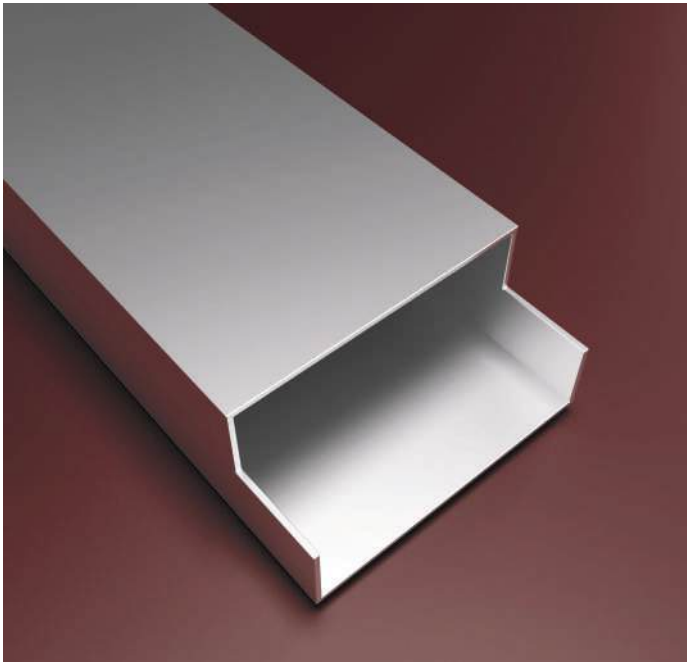
Vertical 90 Cutting



Compound Angle Cutting



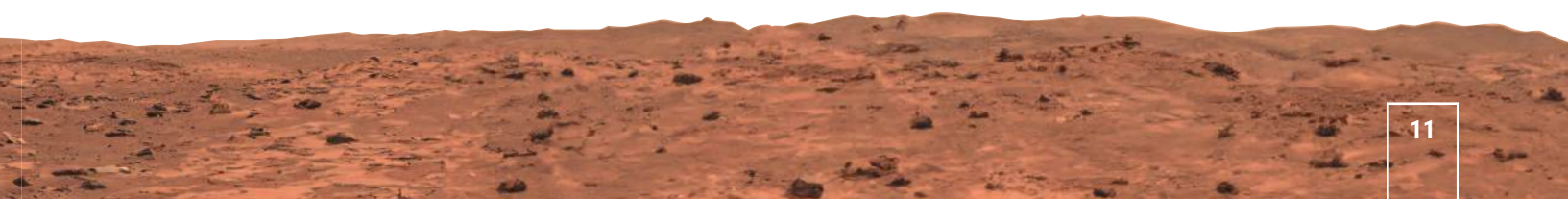
Vertical 45 Cutting



Vertical 90 Cutting



Horizontal 45 Cutting



# MILLING CAPABILITY



Triple Grip Slot

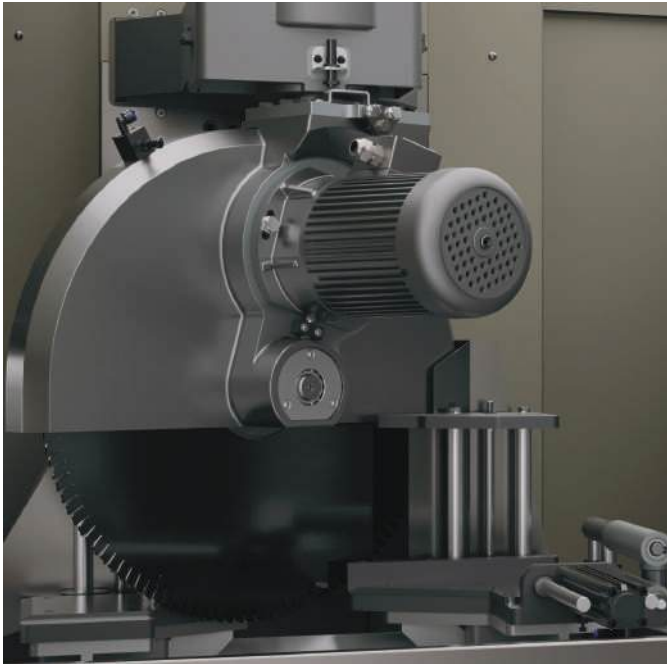


Latches Hole



Drain Slot

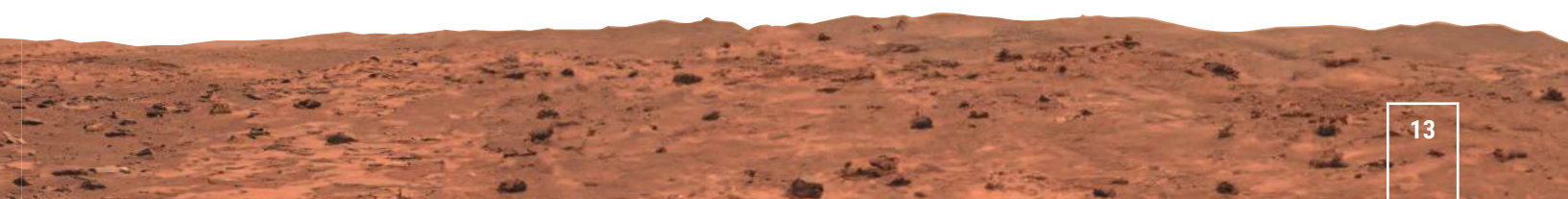
# CUTTING CAPABILITY



Vertical 90 Cutting



Horizontal 45 Cutting





### ALCOR - II R

Ø 550
3 kw - 4HP
3000
30° / 150°
N/A
270
13
3
18.000
ER 20 (1 mm-13 mm)
N/A
Ø5 - 7 qty. / Ø8 - 2 qty. / Ø12 - 1 qty. Ø14 - 1 qty. / Ø20 - 1 qty. / Ø28 - 1 qty.
Triple grip slot Milling; Ø10 - 2 qty / Ø12 - 1 qty.
1
1
1.400
4 +3 (+3for cross surfaces)
7.500
1.200
270
10
8 (8 Axes with Servo)
180
30
150
30
180
30
150
30
Yes
20 / 117
20 / 115
15"Industrial PC
Fanuc
Yes
Yes
Yes
40
60
60
N/A
N/A
42
166
N/A
N/A
90
20
20
400V
32 Kw
50-60
Cabin
Standard
6-8 Bar
Standard
Standard
Optional
Optional
Optional
250
Yes
100-150
15320 x 3050 x 2450
3892
4230

### ALCOR - IV

Ø 550
3 kw - 4HP
3000
0° - 180°
N/A
400
8
3
18.000
ER 20 (1 mm-13 mm)
Optional
Ø5 - 8 qty.
N/A
N/A
N/A
4
8.000
1.200
400
4
11 (11 Axes with Servo)
180
30
300
30
180
30
300
30
Yes
20 / 150
20 / 140
15"Industrial PC
Fanuc
Camquix (CAM Software)
CadXtract(Optional)
Yes
Yes
40
40
40
40
40
40
42
166
N/A
40
90
20
20
400 V
43 kW
50-60
Cabin
Standard
6-8 Bar
Standard
Standard
Optional
Optional
Standard
425
Standard
100-150
16600 x 3025 x 2650
5500
6260

### ALCOR - V

Ø 550
3 kw - 4HP
3000
0° - 360°
0° - 180°
400
8
3
18.000
12 (12 Axes with Servo)
Optional
Ø5 - 8 qty.
N/A
N/A
N/A
4
8.000
1.200
400
4
12 (12 Axes with Servo)
165
30
300
30
165
30
300
30
Yes
20 / 150
20 / 140
15"Industrial PC
Fanuc
Camquix (CAM Software)
CadXtract(Optional)
Yes
Yes
40
40
40
40
40
40
42
166
100
40
90
20
20
400 V
43,5 kW
50-60
Cabin
Standard
6-8 Bar
Standard
Standard
Optional
Optional
Standard
425
Standard
100-150
16600 x 3025 x 2650
5500
6260

ALCOR - V



ALCOR - IV



ALCOR - II C



ALCOR - II R



ALCOR - I



ÖZÇELİK MAKİNA SAN. VE TİC. A.Ş.

Anadolu Mh. Kanuni Cd. No.8 34956 Orhanlı, Tuzla, İstanbul / Turkey  
T: +90 216 304 20 10 | F: +90 216 304 19 88  
www.ozcelik.com | info@oz-machine.com / info@ozcelik.com



Information in this catalogue may be subject to change without notice. Özçelik Makina San ve Tic AŞ is not liable for errors or inaccuracies in the provided information. Trademarks, logos, and brand names used in this catalogue are the property of Özçelik Makina San ve Tic AŞ. Unauthorized use is strictly prohibited.