

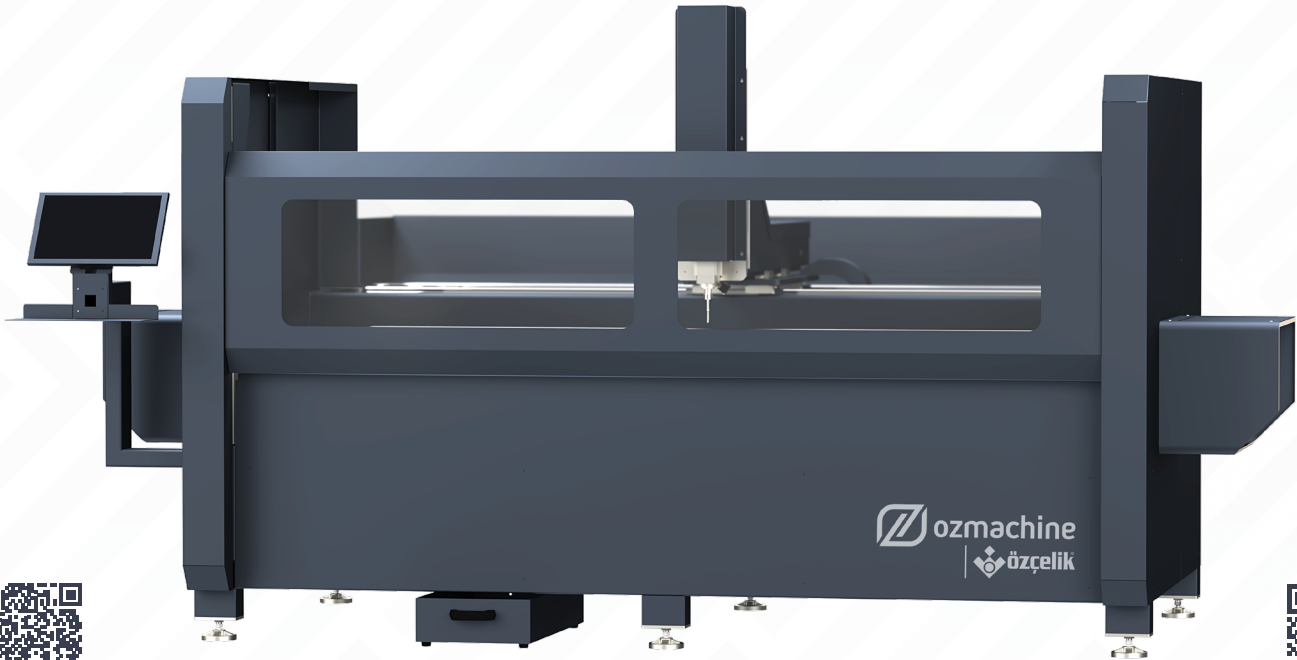


GARNET MAXI

CNC Profile Machining Center (4 Axis)



PRODUCT WEB LINK

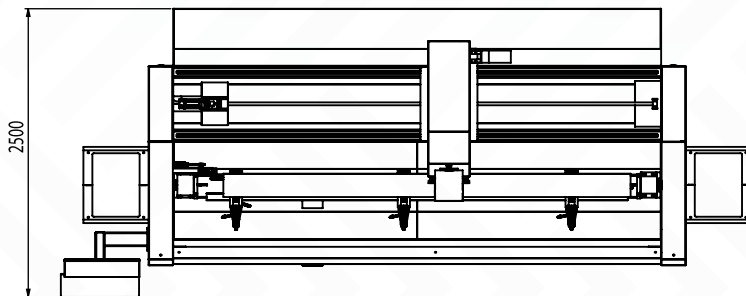
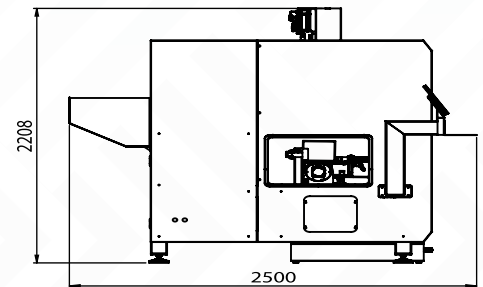
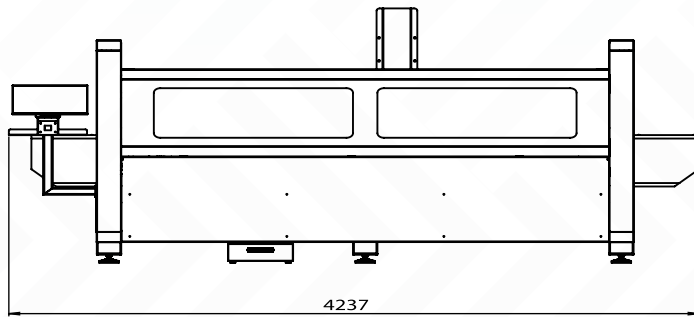


YouTube



WEB

The GARNET MAXI machine is a 4-servo axis profile processing center. In addition to the processing axes, it has the ability to process at all angles between $-90^{\circ}/+90^{\circ}$ thanks to the servo-controlled table rotation system. It is designed to perform milling, drilling, slot opening, and other multi-functional operations on the profile surface precisely in one go with the 3 kW Spindle motor it has. Profiles with a height of 200 mm, a width of 120 mm, and a length of 2500 mm can be processed.



GARNET MAXI

CNC Profile Machining Center (4 Axis)

MACHINING LENGTHS

X Axis (Longitudinal)	2500 mm
Y Axis (Lateral)	120 mm
Z Axis (Vertical)	200 mm
A Axis (Head processing angles)	-90° / +90°
A Axis (Head processing angles)	2500 x 200x200 mm

POSITIONING SPEED

X Axis (Longitudinal)	30 m/min
Y Axis (Lateral)	30 m/min
Z Axis (Vertical)	30 m/min
A Axis (Table Rotation Angle -Servo)	75° /sec

AIR

Pressure	6-8 Bar
----------	---------

ELECTRICAL

Max. Power	8 kW
Voltage	400V 3P, N, PE AC
Frequency	50-60 Hz

SPINDLE

Max. Power	3 kW
Maximum rotation speed	18.000 r.p.m
Tool holder	ER 20
Cooling type	Fan

TABLE ROTATION ANGLE

Servo system table rotation angle	-90° / +90°
-----------------------------------	-------------

PROFILE POSITIONING

Right and left pneumatic profile reference alignment	●
--	---

CONTROL UNIT

Industrial PC - Touch Screen	22"
Camquix CAM program	●

OPERATIONAL AREA

Clamps, standard pcs	3
Clamps, maximum pcs	5
Automatic clamp positioning	Manual
Automatic lubrication system for X, Y and Z axes	●
Cabinet providing protection in processing zone	●
Automatic Tool cooling system	○
Side tunnels	●

● Standard ○ Opsiyonel